

# **Quantum Leben AG**

## **Solvency and Financial Condition**

### **Report 2024**

Version submitted 08.04.2025  
(Revised 22.04.2025: Template S.05.02.04)



## Executive summary

This Solvency and Financial Condition Report (hereinafter “SFCR”) has been prepared in order to assist the regulator to understand the capital position (under Pillar 1 of Solvency II) and the risk management and governance system of Quantum Leben AG (hereinafter “Quantum”) in line with the Solvency II requirements.

Quantum’s internal capital target is to hold more than 130% of its Pillar 1 requirement.

In line with legal and regulatory requirements, the Solvency II balance sheet was audited by KPMG (Liechtenstein) AG (hereinafter “KPMG”).

Quantum is regulated by the Financial Market Authority Liechtenstein (hereinafter “FMA”). The FMA is located at Landstrasse 109, in 9490 Vaduz, Liechtenstein (see <https://www.fma-li.li/>).

## A. Business and performance

Quantum Leben AG was incorporated on 28<sup>th</sup> of December 2004. Quantum Leben AG, Städtle 18, 9490 Vaduz, Liechtenstein is an insurance undertaking organised as a company limited by shares. The shares are not listed on any stock exchange and are privately owned.

Quantum is licensed to offer the following classes of life and non-life insurance:

- Life insurance (Lebensversicherung)
- Unit- and asset-linked life insurance (Anteil- beziehungsweise fondsgebundene Lebensversicherung)
- Capital redemption operations (Kapitalisationsgeschäfte)
- Accident and Sickness (Unfall und Krankheit)

Under the EU/EEA freedom of services, Quantum is passported to various EU countries. It operates under the Temporary Permissions Regime (TPR) in the United Kingdom, and in Switzerland. In the United Kingdom, the underwriting of new business had to be discontinued at the end of 2022 with the expiry of the TPR related to Brexit. The current contracts will be fulfilled in accordance with the contract terms until their expiry within the framework of a “supervised run-off”.

In 2024, Gross Written Premium of EUR 379.7m was booked (+57.2% compared to the previous year (“PY”) of EUR 241.6m), with single premiums increasing by +121.2% (PY +103.4%) and regular premiums growing by +26.8% (PY +24.7%). In 2024, the company expanded its product range to Switzerland and has been offering daily sickness benefits insurance since then.

## B. System of Governance

Quantum observes an effective system of governance that is adequate for the nature, scale and complexity of the risks inherent in its business. Quantum has a Risk Management Function (“RMF”), which along with meetings and other instruments ensure an efficient risk management system. The key elements of risk management are embedded within our systems, with the roles, tasks and reporting channels being clearly defined and documented using the “3 lines of defence” approach. 2024 saw continued time, effort and resource focused on further improving the system of governance and the Risk Management Framework (hereinafter “RMFW”) for Quantum. The further development of risk management and corporate governance, combined with ongoing improvements to systems and workflows, remains a top priority.



The Product Oversight and Governance Committee (hereinafter “POGC”) was implemented in 2018. This POGC enables management to review products and distribution partners and ensure Quantum is in a position to adequately control and optimize new activities.

The System of Governance is explained in more detail in Section B.

### C. Risk Profile

Quantum operates a business model that is supported by an evolving RMFW that ensures business risks are well understood and controlled. These risks are deliberately accepted, governed and monitored. They specifically concern underwriting risks pertaining to the biometric risk portfolio, as well as financial and third-party default risks. Strategic, operational and legal and compliance risks also arise in the course of the business operations. This is facilitated by systematic quantification of all risks and a culture that promotes the importance of risk management. Integral to this is a thorough understanding and articulation of the company’s risk exposures and its utilization of reinsurance.

### D. Valuation for Solvency Purposes

Due to the size of the business and the type of products sold, Quantum uses the standard formula to calculate the solvency capital requirements for Pillar I of Solvency II. Overall, the models used by Quantum are a reasonable implementation of the Solvency II standard formula, where the capital requirement adequately reflects the risks of Quantum.

By end of 2024, the total assets of the Solvency II balance sheet amount to EUR 610.7m. The gross best-estimate liability for risk business corresponds to EUR -24.3m and the risk margin amounts to EUR 15.7m. The gross best-estimate liability for unit-linked business corresponds to EUR 359.9m and the risk margin amounts to EUR 2.7m. The gross best-estimate liability for the non-life business amounts to EUR -1.2m, the corresponding risk margin amounts to EUR 1.4m, and the gross best-estimate liability for the accident and sickness business (modelled as Health NSLT) amounts to EUR 70.6m with a risk margin of EUR 3.0m. The latter risk margin amount is comparatively small as the underlying business is mostly short term and does therefore not contribute significantly to the total risk margin.

### E. Capital Management

Quantum targets to maintain a solvency ratio of at least 130%, in order to have a buffer above the solvency requirement. The solvency ratio is monitored on a quarterly basis and also assessed as part of the annual planning process and in the event of any significant change in circumstances. In the Solvency II balance sheet, the available and eligible own funds (EUR 121.9m, PY EUR 105.0m) consists of EUR 16.2m ordinary share capital (PY EUR 16.2m), EUR 22.3m (PY EUR 22.3m) share premium account and a reconciliation reserve after the consideration of the proposed dividend of EUR 1.8m of EUR 83.4m (PY EUR 66.5m). All own funds are classified as Tier 1 and as such available and eligible to meet both the Minimum Capital Requirement (hereinafter “MCR”) and the Solvency Capital Requirement (herein after “SCR”).

The MCR amounts to EUR 19.7m (PY EUR 16.9m) and the MCR ratio is 618.6% (PY 621.7%), whereas the SCR amounts to EUR 78.8m (PY EUR 58.5m) and the SCR ratio 154.7% (PY 179.3%). This means that the SCR is fulfilled with a secure margin above the minimum level of 100% and Quantum’s own minimum target of 130%.



## A. Contents

<b>Executive summary</b> .....	<b>2</b>
A. Business and performance .....	2
B. System of Governance .....	2
C. Risk Profile.....	3
D. Valuation for Solvency Purposes .....	3
E. Capital Management.....	3
<b>A. Contents</b> .....	<b>4</b>
<b>A. Business and Performance</b> .....	<b>6</b>
A.1. Business.....	6
<b>A.1.1. Business Overview</b> .....	<b>6</b>
<b>A.1.2. Ownership</b> .....	<b>6</b>
A.2. Underwriting Performance .....	6
<b>A.2.1. Risk business</b> .....	<b>6</b>
<b>A.2.2. Accident/Sickness business</b> .....	<b>7</b>
<b>A.2.3. Unit-linked business</b> .....	<b>7</b>
A.3. Investment Performance .....	8
A.4. Performance of other activities .....	8
A.5. Any other information .....	8
<b>B. System of Governance</b> .....	<b>9</b>
B.1. General information on the System of Governance .....	9
<b>B.1.1. Governance Structure</b> .....	<b>9</b>
<b>B.1.2. Key Functions</b> .....	<b>11</b>
<b>B.1.3. Remuneration System</b> .....	<b>11</b>
B.2. Fit and proper requirements.....	11
B.3. Risk management system including the own risk and solvency assessment .....	12
<b>B.3.1. Risk Management System: Organisation and task of Risk Management Function</b> .....	<b>12</b>
<b>B.3.2. Strategy and Objectives</b> .....	<b>13</b>
<b>B.3.3. Own Risk Solvency Assessment</b> .....	<b>13</b>
B.4. Internal Control System .....	13
<b>B.4.1. Compliance Function</b> .....	<b>14</b>



B.5.	Internal Audit Function .....	15
B.6.	Actuarial Function .....	15
B.7.	Outsourcing.....	15
B.8.	Any other information .....	16
<b>C.</b>	<b>Risk Profile.....</b>	<b>17</b>
C.1.	Underwriting risk .....	17
C.2.	Market risk .....	18
C.3.	Credit risk .....	18
C.4.	Liquidity risk .....	18
C.5.	Operational risk.....	19
C.6.	Other material risks.....	19
C.7.	Other Information.....	19
<b>D.</b>	<b>Valuation for Solvency Purposes.....</b>	<b>20</b>
D.1.	Assets .....	20
D.2.	Technical provisions.....	21
D.3.	Other liabilities.....	22
D.4.	Alternative methods for valuation.....	22
D.5.	Any other information .....	22
<b>E.</b>	<b>Capital Management.....</b>	<b>23</b>
E.1.	Own funds.....	23
E.2.	Solvency Capital Requirement and Minimum Capital Requirement .....	25
E.3.	Use of the duration-based equity risk sub-module in the calculation of the Solvency Capital Requirement .....	26
E.4.	Differences between the standard formula and any internal model used .....	26
E.5.	Non-compliance with the Minimum Capital Requirement and non-compliance with the Solvency Capital Requirement .....	26
E.6.	Any other information .....	26
<b>Annex</b>	<b>.....</b>	<b>27</b>



## A. Business and Performance

### A.1. Business

#### A.1.1. Business Overview

Quantum is a life insurer based in Vaduz, Liechtenstein. Quantum is licensed for the classes 1 (term life and disability), 3 (unit linked) and 6 (capital redemption) in life, and for the classes 1 (accident) and 2 (sickness) in non-life insurance. In 2024, the company recorded significant growth in business volume.

- The term life and disability products distributed by our long-standing business partner TAF in the Netherlands are enjoying strong and growing market demand.
- In addition, the new business partners, who were contractually bound from 2020 on mainly in the Netherlands, as well as the new business partner based in Switzerland for the daily sickness benefits insurance launched in 2024, distributed accident and sickness insurance.
- Unit-linked single premiums are mainly generated in Sweden, but recently also on a selective basis in the Netherlands. After they have almost doubled in 2021, declined sharply in 2022 due to the environment characterised by uncertainties in the financial market, nearly doubled again in 2023, they increased again by +121% in 2024.

Overall, the business development is in line with our measured focus on insuring biometric risks in both life insurance and accident/sickness insurance. The strategy of diversification in terms of products, distribution and business partners and target markets was also continued in 2024.

#### A.1.2. Ownership

Quantum is independent and privately owned.

### A.2. Underwriting Performance

Quantum has had a satisfactory business year in 2024 with Gross Written Premium of EUR 379.7m, increasing the premium volume by 57.2% as compared to 2023. Regular premiums grew by 26.8% and single premiums increased by 121.2% compared to the previous year.

#### A.2.1. Risk Life Insurance

Term life insurance (death) recorded growth of 4% in the Netherlands (PY 8%). Products and tariffs are regularly reviewed and updated in order to align them with market developments and our claims experience.

Biometric risk products, i.e. life and accident/sickness insurance, are also offered in other European markets. After the Czech and Slovak Republics, the term life and accident insurance products offered there are now also offered in Hungary and Romania. Around EUR 3.4m (PY EUR 2.3m) in premiums came from other European countries.

In the United Kingdom, the underwriting of new business had to be discontinued with the expiry of the so-called Temporary Permission Regime at the end of 2022. The current contracts will be fulfilled until their expiry within the framework of a "supervised run-off" in accordance with the contract.



### **A.2.2. Accident/Sickness business**

The newly introduced products of lines 1 (accident) and 2 (sickness) are sold for the most part in the Netherlands and Switzerland. These are mainly "employee benefit" and "income protection" solutions for corporate customers. Sales, policy administration and claims settlement are carried out by selected business partners who are well established in the market.

The new business partners, who were contractually bound from 2020 on, distributed accident and sickness insurance with a premium volume of more than EUR 112.3m (PY: EUR 80.1m), mainly in the Netherlands, as of 01.01.2021. For Solvency purposes, the accident/sickness products are modelled using non-similar to life techniques ("NSLT").

### **A.2.3. Unit-linked business**

Quantum continues to manage the small portfolio of Italian and German unit-linked policies that was transferred from a competitor to Quantum by the FMA on 24 February 2020. The related assets are managed in the best interest of the policyholders.

In unit-linked and investment-linked life insurance, the single premiums of approximately EUR 172m (PY EUR 78m) came primarily from Sweden. Regular premiums of EUR 0.7m (PY EUR 0.9m) were booked from the policies taken over in 2020. For the rest, the unit-linked book stems from Quantum's initial focus on retail unit linked policies that were offered in various European countries. None of the unit-linked contracts contains any sort of capital nor performance guarantees regarding the underlying assets.

### **A.2.4. Health Insurance (disability)**

After close examination, one part of biometric insurance products was reclassified in 2024 for Solvency II purposes. The disability business is now modelled using Health similar to life techniques ("Health SLT"). The disability insurance business in the Netherlands is responsible for 87% of the premiums of this new category and recorded growth of 9% in 2024.



### A.3. Investment Performance

For the biometric risk products, the company holds mathematical reserves. The funds backing these reserves are invested conservatively and on a diversified basis.

Investment income benefitted from a favourable market environment. The investment assets where Quantum bears the investment risk increased in 2024 from EUR 201.7m to EUR 243.8m, the corresponding investment result amounts to approximately EUR 6.4 (PY EUR 5.0m). The investment result 2024 in relation to the average investments results in a net book value return of around 2.83%.

The table below presents the mix of assets where Quantum bears the investment risk:

in EUR	2024	2023
<b>Investment Assets</b>	<b>243'780'741</b>	<b>201'710'179</b>
1. Shares, other non-fixed interest rate securities and investment fund units	21'841'289	18'940'987
2. Bonds and other fixed-interest rate securities	145'442'927	118'548'004
4. Mortgage loans	53'850'000	47'600'000
5. Other loans	1'239'531	0
6. Deposits with banks	11'404'405	6'617'560
7 Other investment assets	10'002'589	10'003'628

### A.4. Performance of other activities

Quantum had no other material income or expenses from other activities that had an impact on its performance in 2024.

### A.5. Any other information

Other than as noted above, no other events occurred in 2024 which had a material impact on the business or performance of Quantum.





## B. System of Governance

### B.1. General information on the System of Governance

Quantum operates an effective system of governance that ensures solid and prudent management, which is deemed appropriate for the nature, scale and complexity of the risks inherent in its business. The key elements of risk management, along with roles, tasks and reporting channels are clearly defined and documented, using the “3 lines of defence” approach.

The know-how of all employees is continually being improved with internal and external training as well as other measures to increase their overall understanding, knowledge and competence (e.g. regarding General Data Protection Regulation (herein “GDPR”) and Anti-Money Laundering (hereinafter “AML”) as well as the newly introduced Digital Operational Resilience Act (“DORA”).

Considering the countries and territories in which Quantum operates, the relatively low single and recurring premiums and the focus on biometric risk insurance contracts, Quantum considers its GDPR and AML risk as medium to very low.

#### B.1.1. Governance Structure

Quantum has three governing Bodies: The Annual General Meeting (hereinafter “AGM”), the Board of Directors (“BoD”) and the Management Board (“MB”). Their functions and powers are defined by law, the Articles of Association, and by rules of procedure and internal guidelines. The supervisory requirements for (re)insurance undertakings, especially the Liechtenstein Insurance Supervision Act (“ISA”) and the European supervisory regulations (Solvency II implementing measures) emphasise the need for responsible corporate governance. They include specific rules on various issues such as business organisation or the qualifications and remuneration of members of the BoD, MB and other individuals.

#### Annual General Meeting

The Annual General Meeting decides on the appropriation of profits and on election and the discharge of the BoD. Besides this, the Annual General Meeting has to approve changes to the Articles of Association and decides on issuing new share capital.

#### The Board of Directors

In compliance with the Company’s Articles of Association, the BoD has three members. All are representatives of the shareholders, elected by shareholder vote at the Annual General Meeting.

At the beginning of 2021, the BoD decided that until further notice, it will also act as the company’s Audit Committee and assume the duties as defined in Art. 347a PGR.

The BoD appoints the members of the MB, which consists of at least two members. The BoD is responsible for setting the strategic goals, the governance as well as the risk management principles. The BoD can delegate the implementation of the strategy and the corresponding processes, as well as the preparation of board resolutions to the MB. However, ultimate responsibility remains with the BoD. Near-term strategic expectations are reflected within an annual business operational budget-plan which the MB proposes and the BoD reviews and approves annually.

#### The Management Board



The MB consists of at least two members; beyond this, the number of members is determined by the BoD as mentioned above. In 2024, the MB of Quantum comprised three members.

The MB is responsible for normal business operations within the limits set by the BoD. Among other things, the MB is responsible for managing the Company, and in particular for implementing the Company's agreed objectives and strategy. The MB is encouraged by the BoD to make any and all recommendations for strategy improvement to the BoD. In doing so, it is obliged to safeguard Company interests and endeavour to achieve a sustainable long-term increase in the Company's value. It does take account of the interests of shareholders, employees, and other stakeholders of the Company. The MB is responsible for effecting adequate risk management and risk control in the Company. It must ensure that statutory requirements and internal Company guidelines are observed, and works to achieve their compliance.

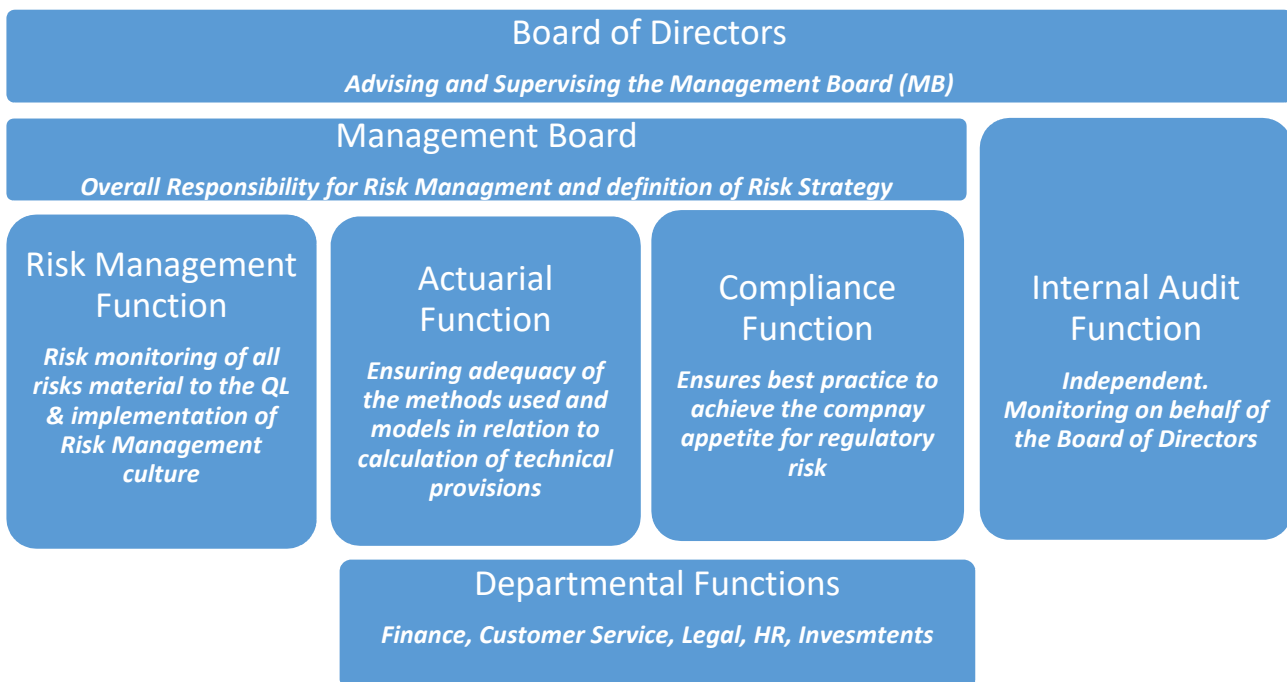
### Collaboration between Management Board and Board of Directors

The MB and the BoD together form the Administrative, Supervisory and Management Board (ASMB).

The MB and the BoD cooperate closely for the benefit of the Company. The MB coordinates the Company's strategic approach with the BoD and discusses the current state of strategy implementation with it at regular intervals. The MB reports regularly and as needed to the BoD about all questions relevant to the Company.

The BoD was regularly updated on the work of Committees and given updates on major pending and resolved legal proceedings.

In the following the corporate structure is presented:



The detailed duties of the BoD and the MB are aligned to reflect the above organisational structure.



### B.1.2. Key Functions

The four key functions within Quantum are defined as Actuarial (“AF”), Risk Management (“RMF”), Compliance (“CF”) and Internal Audit (“IAF”). Both the IAF and AF are outsourced and maintain some autonomy from Quantum’s internal functions. The IAF reports directly to the BoD, whereas the RM, CF and AF report to the MB. All key functions may revert to the BoD directly on any matters deemed relevant. The BoD actively seeks interaction with key function holders within its regular BoD meetings.

Quantum has in place a “three lines of defence” model, allowing for different and clearly defined levels of control responsibility:

- 1st line of defence – Business units and functions own and manage risks
- 2nd line of defence – functions that oversee or specialise in risk management and compliance
- 3rd line of defence – functions that provide independent assurance, e.g. internal and external audit

The distinction between the different lines of defence is principle based and determined by control activities. To ensure the effectiveness of our ICS, all functions are obliged to co-operate and exchange necessary information and advice.

### B.1.3. Remuneration System

Salaries and remunerations are consistent with market practice and in line with applicable laws and regulations. There are no defined bonus plans nor share options available to employees, BoD or MB. The pension and retirement schemes correspond to market standard for all employees.

Quantum offers a defined contribution pension plan to its employees, which fulfils all regulatory and social security requirements.

## B.2. Fit and proper requirements

The members of the BoD and the MB, as well as the key function holders, are subject to the FMA “Fit and Proper” test and approval prior to their appointment. All staff are carefully recruited based on skills and knowledge for the applicable role within the company. All key functions are in line with the applicable regulations and approved by FMA.

Individuals with key functional responsibility must act responsibly with integrity, and carry out activities with appropriate diligence and care. Conflicts of interest must be avoided or disclosed.

As a minimum, individuals are required to provide evidence of their professional qualifications in the specified function or role. The information includes but is not limited to:

- Education
- Management experience
- Language skills
- Practical knowledge
- Specialist knowledge in the respective function

The general requirements equally apply to outsourced functions, with the outsourced service providers being responsible to ensure their suitable qualifications.



## **B.3. Risk management system including the own risk and solvency assessment**

### **B.3.1. Risk Management System: Organisation and task of Risk Management Function**

The Risk Management policy, which contains the principles for handling and reducing risks using the three-lines-of-defence concept, frames the Risk Management System. The Risk Management System encompasses various aspects of the Risk Management Function such as the Risk Management Process, the Risk Appetite, and the Risk Register Assessment.

Quantum's risk-based RM process is practical, sustainable, and easy to understand. The process proceeds in a structured and disciplined way, properly considers the nature, scale and complexity of the risks inherent to its existing and or contemplated business, as well as endeavouring to spot emerging and new risks. Risk appetite is calibrated by using capital/solvency that is and or can be put at risk.

The RM process includes the following components:

#### **Cycle 1**

- Strategy: setting up appropriate risk strategy
- Identification: recognition and identification of risks
- Analysis: qualitative and quantitative evaluation and ranking of risks
- Mitigation: decide how to respond to significant risks, i.e. decide for each risk whether and to what extent it can be tolerated or should be mitigated; which risks need to be transferred or terminated; which existing treatments are deemed sufficient and which should be developed
- Monitoring & Controlling: perform monitoring of the risks and functionality of controls
- Testing & planning improvements: perform independent tests of integrated controls for their design and specification, efficiency, possible control gaps or overlapping controls
- Reporting: report on main risks, control efficiency and, if necessary, suggestions for improvements, including regular reporting to the BoD
- Developing and utilizing annual and medium-term business plans and related financial forecasts to effectively monitor the capital and solvency plan

#### **Cycle 2-n**

- Review and improve previous cycle and proceed with the steps

The risk strategy at Quantum is derived from corporate strategy set by the BoD.

The RMF forms part of the second line of defence, and its purpose and objective is to assist the ASMB and other functions in the effective operation of the risk management system. The RMF follows the regulatory requirements and considers the level of risks to which Quantum is exposed. The RMF is responsible for identifying, measuring, monitoring and reporting risks within and outside of Quantum's risk appetite, as well as for coordinating the implementation of the ORSA process and ensuring the effective functioning of the RM framework.



### **B.3.2. Strategy and Objectives**

Quantum's risk strategy is a core element of our RMFW. Within this strategy Quantum aims to:

- Protect the brand and reputation of Quantum,
- remain solvent even in the event of extreme scenarios or events,
- maintain sufficient liquidity to always meet obligations, and
- provide sustainable profitability and create shareholder value.

Implementation of the risk strategy is supported through our defined risk appetite, which establishes in more concrete terms Quantum's risk tolerance level utilizing the following elements:

- rating/scoring of identified risks,
- allocating capital and defining minimum as well as target capital ratios,
- managing liquidity to maintain flexibility,
- defining quantitative financial limits, and
- defining corporate rules that govern the conduct of the business.

Adherence to Quantum's risk strategy and corresponding risk appetite is achieved by implementing appropriate risk management, monitoring and reporting processes.

### **B.3.3. Own Risk Solvency Assessment**

The Own Risk Solvency Assessment (hereinafter "ORSA") report, which is generated annually in the second half of the year, primarily consists of an analysis of the current and future risks, which could lead the company to becoming insolvent within the next 12 months.

As risks are changing constantly and are caused and or impacted by internal and external factors, a review of the RMFW is done annually during the ORSA process to assure that the universe of relevant risks, existing and emerging, is captured correctly.

The ORSA is the process by which the BoD considers the strategy of the company, the risks faced in pursuing and or executing that strategy and the appropriate mitigation of those risks (one possible outcome of which may be to hold additional capital) to ensure the residual risk remains within the BoD risk appetite. The BoD with the MB and RM use the ORSA to validate the capital adequacy of the Company.

The BoD owns the review and validation of the ORSA process and has provided direction to the MB to ensure that it meets the requirements of the BoD, including that the ORSA satisfies all applicable regulatory compliance governing the ORSA process.

In the event of significant change in risk profile or material changes to the business operations, an ad-hoc ORSA may be performed. No ad-hoc ORSA was deemed necessary during 2024.

## **B.4. Internal Control System**

The ICS is part of its compliance framework, being the first line of defence in the 'three lines of defence' model the Company has implemented.

ICS are the measures that are incorporated into systems and processes to control day-to-day activities within Quantum. There shall be adequate controls implemented to ensure compliance with Quantum's corporate policies and any relevant regulations to which Quantum is subject, and to highlight any significant breakdown in



control function or inadequacy of process. The internal controls exist to ensure that assets are secured and protected, to prevent and reveal errors and irregularities, ensure accurate decision-making data and financial reporting information, and to ensure adherence to laws and regulation.

Quantum has implemented policies which reflect the BoD approach to key areas of the business, and procedures, where appropriate, which describe how the MB fulfils those policies. The BoD is ultimately responsible for overseeing and maintaining the adequacy and effectiveness of ICS, with, day-to-day oversight provided by the MB and the Risk Management Function.

The ICS guideline defines concepts and individual controls, stipulates ownership responsibilities and provides a guide for the description of controls. These include but are not limited to:

- Segregation of duties and responsibilities,
- Documentation of controls within defined process

The functioning of the ICS requires the involvement of management and employees of the company. Testing of controls and verifying their proper functioning, efficacy, and evidencing is essential to Quantum's ICS.

#### **B.4.1. Compliance Function**

The Compliance Function forms part of the second line of defence, and its purpose and objective are to ensure best practice and to help achieve Quantum's appetite for regulatory risk which is 'very low'. Compliance ensures the awareness of laws and regulations, responding appropriately to legislative changes and requirements, litigation and disputes, and regulatory proceedings is embedded with Quantum's BoD, MB and staff.

The Compliance Function is responsible for ensuring that all company policies are reviewed at regular intervals to make certain that they are still fit for purpose, and to propose modifications and or additions and deletions, in liaison with the BoD as appropriate. The relevant area of the business is responsible for ensuring that their procedure(s) are up to date, documented, evidenced and reflect how the business operates. All reviews are recorded and versions controlled. All amendments are submitted to the BoD or relevant Committee for approval.

The business is responsible for implementing first line controls to manage and mitigate regulatory risk whilst the role of Compliance is to:

- Train and advise the business so there is a good understanding of the regulatory requirements and the regulatory environment in which Quantum operates;
- Identify and evaluate risks in conjunction with RM that are associated with the non-compliance of legal and regulatory requirements; propose remedies for any deficiencies and or non-compliance situations.
- Be responsible for tracking, assessing the impact of, and communicating and training staff about new regulatory developments. Also ensuring there is a central point of contact with a clear understanding of the regulator's approach and the standards to which the Company is held to account.
- Evaluate regulatory risk and assist in the identification of regulatory risk and advise on ways to manage and mitigate risk to protect the firm and its clients in coordination with RM;
- Advise the business on the design and implementation of controls and or seek out the proper expertise to do so;
- Monitor and challenge the behaviours and controls in the business to promote a culture of compliance;
- Ensure best compliance practice in all countries of operation, sometimes verifying outsourced parties are adhering to any rules and regulations to which Quantum is subject.



Compliance seeks to be a trusted advisor to the business, supporting innovation whilst partnering with the business and regulators to ensure regulatory obligations are met.

## **B.5. Internal Audit Function**

The company's Internal Audit Function is outsourced and maintains autonomy from other business functions. The key mandate of Internal Audit is to review the existence and the effectiveness of the ICS. In addition, it is responsible for controls evaluations, testing, evidentiary review and recommendations, and plays a pivotal role in verifying the overall efficacy of Quantum's ICS.

The Internal Auditor reports its auditing results and recommendations to the BoD in the form of written audit reports, and/or immediately in the event of identifying serious deficiencies; of which none were found for the reporting period. The Internal Auditor works with the BoD to establish and annually revalidate and update a three-year audit plan designed to ensure all material areas of Quantum's ICS and operations are reviewed periodically as required.

## **B.6. Actuarial Function**

The Actuarial Function is outsourced and operating independently and objectively to fulfil its functional requirements.

With regards to the Actuarial Function, the actuarial control system consists of the following processes and controls:

- Statutory liability valuation process including the key checks of the statutory valuation process
- Process description for Reinsurance Accounts including the key checks of the reinsurance accounts
- Solvency II calculation process together with the corresponding key controls

## **B.7. Outsourcing**

Solvency II requires the companies to establish standards to assure the quality of service as well for outsourced activities. The goal of these standards should be to avoid that the service level quality to the policyholder decreases due to an outsourcing arrangement.

Outsourcing is explicitly addressed in Quantum's risk management function. In the course of 2020, Quantum concluded a number of new outsourcing agreements with business partners in the Netherlands to prepare for new Accident and Sickness products offered starting 2021. As Quantum's distribution strategy is to work through Managing General Agents (MGAs), it will continue to establish several new outsourcing arrangements annually. Quantum also seeks to utilize legal and compliance advisor in each territory as well as other local service providers with local expertise (e.g. claims handlers, actuaries, etc.) to ensure quality client service and proper conduct of business.

The Company employs own staff for the management and oversight of the outsourcing partners. In defined intervals, they perform operational audits, both on site at the premises of the outsourcing partners (MGA's) and remotely, in order to ensure their adherence to the agreed professional standards, terms and conditions.



The outsourcing policy covers the following processes:

- Planning and classification
- Risk Analysis and due diligence
- Contract management
- Monitoring
- Renewal and termination

All outsourcing agreements are concluded in line with the outsourcing rules, received regulatory approval and are reviewed regularly.

## **B.8. Any other information**

There is no other material information regarding the system of governance.





## C. Risk Profile

Quantum operates a business model that is supported by a dynamic RMFW that ensures risks are well understood and controlled. This is facilitated by systematic quantification of all risks and a culture that promotes the importance of risk management. The BoD and MB understand and emphasize a risk and controls ‘tone-at-the-top’. Integral to this is a thorough understanding and articulation of Quantum’s risk exposure.

Assessing the prevailing risk landscape within Quantum allows the MB to evaluate the appetite for each emerging risk and to ensure that all identified risks are quantified and managed in line with Quantum’s risk appetite as agreed with the BoD.

The RMFW is implemented within the company at a level proportionate to the complexity, nature, and size of the business, as well as whether it is subject to regulation, and the level of risk to the company.

The company has a Risk Register in place which the MB reviews, considers regularly and reports on to the BoD as appropriate. Special consideration is given to risk concentration(s) and or risk which are interdependent.

Quantum completes the Solvency II calculation and monitors the Solvency II requirements on behalf of BoD regularly, usually at least quarterly, to ensure that the SCR is met and risks to Solvency II requirements are monitored and managed.

### Risk Appetite and Tolerance

Quantum faces a broad range of risks. These risks include those resulting from its insurance liabilities as well as from its day-to-day operational activities.

In terms of mortality and morbidity insurance risk, Quantum has a medium to high risk appetite. Quantum makes resources available and takes appropriate action to control and mitigate these to acceptable levels. Quantum recognises that it is not possible or necessarily desirable to eliminate some of the risks inherent in its activities, commensurate with its capital appropriations to cover those risks. Acceptance of some risk is often necessary to foster innovation within business practices and to grow our business in order to serve market needs and to generate profits and capital for further expanded risk acceptance and management.

This is reviewed as part of the Risk Management Meetings among the key functions, including RM, Compliance, Actuarial and Finance to determine the appropriateness of risk scenarios to Quantum, including the assessment of additional potential scenarios. The results of any such reviews are provided to the BoD, which reviews and establishes the acceptable level of potential risk losses and any related capital requirement for Quantum. They are also used in formulating our ORSA stress scenarios.

### C.1. Underwriting risk

The underwriting risk is generally referred to the risk of loss or of adverse change in the value of insurance liabilities, due to inadequate pricing and reserving assumptions. It is currently the biggest risk for Quantum. The main exposure is to lapse, disability and life catastrophe risk.

All of Quantum’s insurance risks directly connected with the life of an insured person are referred to as biometric risks. They include in particular miscalculation risk of: the mortality, life expectancy, morbidity and occupational disability of the insured. These risks are material within Quantum’s business model and strategy.



In addition, we are exposed to the lapse risk because the cash-flows are dependent upon the behaviour of the insured person.

Catastrophe risk is kept to a minimum via the reinsurance treaties in place.

Details of the Solvency Capital Requirements relating to Underwriting Risk can be found in section E.2.

## **C.2. Market risk**

Like all insurance companies, Quantum is faced with a challenging capital market climate.

The investment process follows strict investment guidelines and it is monitored by the company's Investment Committee, who reports to the MB on a regular basis. The Investment Committee meets periodically and receives reports and outlooks from its investment advisors. Quantum's insurance products are not heavily interest-rate sensitive further enabling a cautious and diversified investment portfolio supporting technical and policyholder reserves.

## **C.3. Credit risk**

Applying its risk policy, Quantum has assessed the following key credit risks:

- Reinsurance counterparty and other recoveries risk.
- Premium and other counterparty credit risk.
- Investment counterparty credit risk, including a low level of custodial risk.

Quantum seeks to limit exposure to credit risk as far as is practical and has established procedures and monitoring requirements to mitigate credit risk. Amounts receivable are actively monitored and reconciled monthly.

## **C.4. Liquidity risk**

The liquidity risk refers to the risk of Quantum being unable to meet its financial obligations when they become due.

Core elements of the liquidity management of our investments are the management of the maturity structure of our investments on the basis of the planned payments projections arising out of our technical liabilities and regular liquidity planning. As of 31.12.2024, Quantum had a cash balance of approximately EUR 14.4m (cash and cash equivalents).

Above and beyond the foreseeable payments, unexpected and exceptionally large payments may pose a threat to liquidity. This, however, is in part mitigated by the Reinsurance programme Quantum has in place.

Additionally, this is in part as well covered by the expected profits included in future premiums (hereinafter "EPIFP"). As of 31<sup>st</sup> of December 2024, the net EPIFP amounts to EUR 76.8m (PY EUR 61.1m). More details to the EPIFP can be found in section D.2.



## C.5. Operational risk

Operational risk arises from the losses occurred due to the inadequacy or failure of an internal process or control, or as a result of an event triggered by employee-related, system induced and / or external factors. The focus is risk prevention and to minimise risk where and whenever possible.

Within our operational risk framework Quantum considers, in particular:

- Business Continuity
- Outsourcing
- Human Resources
- Fraud
- Information Technology Security

Quantum relies on internal resources for certain operational activities, whilst outsourcing certain functions. All outsourced activities are subject to service level agreements in accordance with regulatory requirements and are subject to ongoing monitoring of performance levels. Prior to their appointment, all service providers are assessed for their competence to perform the respective services in accordance with the Outsourcing policy.

The processes and controls over operational risk, together with the measures defining risk appetite are assessed regularly as part of the monitoring undertaken by Management and reported to the Risk Management & Compliance Committee on a quarterly basis.

Cyber risk continues to receive a great deal of regulatory and public attention in recent years. It is usually defined as operational risk that information is lost, inaccessible, stolen or leaked. It is assumed that data corruption is possible due to human failure or potential attacks from the Internet and similar networks on the integrity, availability and confidentiality of the infrastructure, particularly with regard to critical and/or sensitive data and IT systems. As a result, all data will be lost unless there are copies elsewhere.

Due to its evolving nature, along with the legal and regulatory sensitivities of this risk, the management continues to closely monitor the development of the IT / Data Security environment, engaging and using outside advisors as appropriate.

## C.6. Other material risks

Other risks deemed material to Quantum are primarily reputational risk, strategic risk and emerging risk.

## C.7. Other Information

There is no other material information regarding the risk profile.



## D. Valuation for Solvency Purposes

### D.1. Assets

The total Solvency II assets amount to EUR 610.7m by end of 2024, compared to EUR 550.2m by end of 2023. They sum up from the following asset items:

Asset item	Solvency II 2024	Statutory 2024	Solvency II 2023
Deferred acquisition costs	0	5'853'990	0
Bonds and investments	168'775'746	169'261'384	135'875'336
Loans and mortgages	66'970'848	63'850'000	59'388'285
Unit-linked funds	358'284'234	358'284'234	351'003'301
Cash and cash equivalents	14'371'905	14'371'905	8'806'762
Reinsurance recoverables	-17'279'765	88'055'283	-18'869'065
Receivables	19'216'535	19'216'535	13'872'156
Any other assets	347'875	356'706	135'851
<b>Total</b>	<b>610'687'378</b>	<b>719'250'037</b>	<b>550'212'625</b>

All Solvency II positions are valued using market values or alternative valuation methods as appropriate.

Future uncertainties are a result of the market and counterparty default risk, as considered in the corresponding Solvency II modules.

The main differences between the statutory and the Solvency II valuation are the following:

- With respect to the bonds, the change from amortised cost to market valuation caused a slight decrease of the value.
- The mortgage loans are valued by a cashflow model in Solvency II, whereas in the statutory balance sheet the nominal value is considered.
- The reinsurance recoverables are valued in Solvency II on a best-estimate basis.
- Finally, among other things, several statutory positions were used which are nil in Solvency II. First, the activation of acquisition costs is not applicable for Solvency II, as it represents no available cash-flow in the Solvency II cash-flow model. Secondly, fixed, intangible assets, and software licenses were booked, which are not considered in the Solvency II balance sheet.

The difference in Solvency II assets by end of 2024, compared to 2023, are mainly caused through the growth of investments and unit-linked funds.

There are no changes in the asset valuation methodology with respect to the previous Solvency II calculations.



## D.2. Technical provisions

### Liability amounts

The total Solvency II best-estimate liabilities (BEL) including risk margin (RM) amount to EUR 407.7m by end of 2024, compared to EUR 381.4m by end of 2023, mostly due to the increase in the new Dutch income protection business and Swiss daily sickness benefits insurance within the Accident and Sickness insurance.

### Calculation methods and assumptions

The main products of both lines of business are calculated by a cash-flow model with interest rates defined by the European Insurance and Occupational Pensions Authority (hereinafter “EIOPA”).

The mortality and disability rates are based on population tables with adjustments according to the empirical evidence at Quantum. The core actual expenses (Salary) of Quantum are mostly in CHF whereas the other cash-flows are typically in EUR.

For all products, a going-concern approach for the expense assumptions is used, leading to per-policy fixed expenses, which can be different for different products. The per-policy expenses are derived from the annual expense analysis.

For all life products, the policy term has been taken as contract boundary. However, for the new Dutch income products, a one-year time horizon has been applied as contract boundary.

With respect to the Dutch income products, the chain-ladder approach has been applied for the derivation of the best-estimate loss ratios for the two largest products Verzuim and Ziektewet. For the smaller lines of business the expected loss ratio method has been applied with the assumptions used being based on the pricing analysis.

With respect to the Swiss daily sickness benefits insurance, the pricing loss ratio as mentioned above for the for the smaller lines of business is applied as well as by considering the payment patterns based on data provided by FINMA for the Swiss Solvency Test (“SST”).

The risk margin has been calculated by choosing one or two reasonable risk drivers for each line of business and project the SCR attributed to this line of business proportional to these risk drivers.

### Level of uncertainty

As quarterly experience analyses are performed for all important parameters and as the main risks are mostly reinsured, the uncertainty of the technical provisions is reduced to an acceptable level. However, special events or macroeconomic trends could lead to variance to the technical reserves.

### Differences of methodology to statutory valuation

All statutory balance sheet items are tested regarding market-consistency before taking them into the Solvency II balance sheet. The technical provisions of the Solvency II balance sheet are calculated based on the best-estimate cash-flows with consideration of future lapses and future profits. In addition, the discounting is applied based on EIOPA’s yield curve.

### Reinsurance contracts



There are several reinsurance contracts in place to share the insurance risks of Quantum with its reinsurance partners for the risk business, i.e. both the Dutch term life and individual disability portfolios, as well as for the Accident and Sickness insurance, i.e. the Dutch income products.

Furthermore, there are reinsurance covers for smaller business portfolios such as Swiss unit-linked, Annuity and Critical Illness.

### **Fund look-through**

In order to evaluate the risks inherent within the investment funds, Quantum performed a look-through in order to comply with the reporting to the FMA. The fund look-through assumptions used for the year-ending 2024 Pillar I calculations are based on an internal analysis done at the beginning of 2025.

For the Pillar III look-through reporting, all available information was collected from Morningstar. Quantum was able to reach a reporting coverage of more than 80% of all unit-linked investments.

### **Expected profits included in future premiums**

Expected profits included in future premiums (hereinafter “EPIFP”) are profits which result from the inclusion in technical provisions of premiums on existing (in-force) business that will be received in the future, but that have not yet been received. The expected profits arising from future premiums may be a significant component of the excess of assets over liabilities under Solvency II.

As of 31<sup>st</sup> of December 2024, the net EPIFP amounts to EUR 76.8m (PY EUR 61.1m).

### **D.3. Other liabilities**

The other liabilities of the Solvency II balance sheet amounted to EUR 79.4m (PY EUR 62.4m), of which EUR 13.3m (PY EUR 9.8m) are deferred tax liabilities stemming from the cash-flow model.

### **D.4. Alternative methods for valuation**

In line with Article 9 (4c) of the Commission Delegated Regulation (EU) 2015/35 of 10 October 2014, certain unlisted shares were valued at cost, as in the statutory balance sheet.

### **D.5. Any other information**

There is no other material information regarding the valuation for solvency purposes that has not been already disclosed.



## E. Capital Management

### E.1. Own funds

The statutory equity of EUR 55.6m (PY EUR 50.6m) consists of EUR 16.2m ordinary share capital, EUR 22.3m share premium account related to ordinary share capital, the legal reserves of EUR 1.6 m (PY EUR 0.0 m), the profit carried forward (after profit allocation) of EUR 9.0 m (PY EUR 10.5m) as well as the profit of EUR 6.4m (PY EUR 5.2m) in the financial year 2024. The profit stems from the operating insurance business and from the investment income realised.

In the Solvency II balance sheet, the available and eligible own funds of EUR 121.9m (PY EUR 105.0m) consists of EUR 16.2m ordinary share capital, EUR 22.3m share premium account and a reconciliation reserve after deductions of EUR 83.4m (PY EUR 66.5m) as well as the proposed dividend of EUR 1.8m. All own fund items are classified as Tier 1 and as such available and eligible to meet both the Minimum Capital Requirement (hereinafter “MCR”) and the Solvency Capital Requirement (herein after “SCR”).

#### Reconciliation Reserve

The reconciliation reserve after deductions of EUR 83.4m results as shown in the table below:

Reconciliation Reserve	2024	2023
Asset revaluation	-108'562'659	-92'421'377
Technical provisions revaluation	189'970'747	158'074'939
Deferred tax liabilities	-13'301'556	-9'812'532
Profit	6'441'183	5'219'813
Profit carried forward	8'998'570	5'278'757
Legal reserves	1'623'500	1'623'500
Proposed dividend	-1'500'000	-1'500'000
<b>Total Reconciliation Reserve</b>	<b>83'669'785</b>	<b>66'463'100</b>

The profit (EUR 6.4 m) and the profit carried forward (EUR 9.0m) as well as the legal reserves (EUR 1.6m) are in line with statutory balance sheet and were allocated to the reconciliation reserve as requested by the FMA.

Furthermore, the BoD proposes to distribute a dividend of EUR 1.8m from the net profit for the year 2024 in the amount of EUR 9.0m and to carry forward the balance sheet profit to new account.



In summary, the translation from the statutory balance sheet to the Solvency II balance sheet can be presented as follows:

### Simplified statutory balance sheet as of December 31, 2024

Assets		Liabilities	
Unit-Linked Assets	358'284'234	Statutory equity	55'566'854
Investments backing risk products	169'261'384	Ordinary share capital	16'235'000
Loans and mortgages	63'850'000	Share premium account	22'268'601
		Legal reserves	1'623'500
		Profit carried forward	8'998'570
		Profit	6'441'183
Reinsurance recoverables	88'055'283	Statutory Technical Provisions	597'627'559
Receivables	19'216'535	Other Provisions	2'551'705
Cash and cash equivalents	14'371'905	Deposits from reinsurers	48'323'554
Deferred acquisition costs	5'853'990	Payables	14'740'168
Any other Assets	356'706	Any other liabilities	440'197
<b>Total Assets</b>	<b>719'250'037</b>	<b>Total Liabilities</b>	<b>719'250'037</b>

### Simplified Solvency II balance sheet as of December 31, 2024

Assets		Liabilities	
Unit-Linked Assets	358'284'234	Own Funds	121'873'386
Investments backing risk products	168'775'746	Reconciliation Reserve*	81'569'785
Loans and mortgages	66'970'848	Net Asset Value	38'503'601
		Proposed Dividend	1'800'000
Reinsurance recoverables	-17'279'765	Net Best-estimate Liabilities	371'650'693
		Risk Margin	36'006'118
Receivables	19'216'535	Other Provisions	2'551'705
		Deferred Tax Liability	13'301'556
Cash and cash equivalents	14'371'905	Deposits from reinsurers	48'323'554
		Payables	14'740'168
Any other Assets	347'875	Any other liabilities	2'240'197
<b>Total Assets</b>	<b>610'687'378</b>	<b>Total Liabilities</b>	<b>610'687'378</b>

(\*) without the proposed dividend

For further details, please refer to the disclosed QRTs in the Annex.





## E.2. Solvency Capital Requirement and Minimum Capital Requirement

### Target

Quantum targets to maintain a solvency ratio of at least 130%, in order to have a buffer above the solvency requirement. The solvency ratio is monitored on a quarterly basis and also assessed as part of the annual planning process and in the event of any significant change in circumstances.

### SCR and MCR

The MCR is EUR 19.7m and the MCR ratio is 618.6%, whereas the SCR is EUR 78.8m and the SCR ratio 154.7%. This means that the SCR is fulfilled with a secure margin above the minimum level of 100% and the own self-imposed target of 130%.

The SCR splits into the following modules:

SCR Modules	2024	2023
Market	30'618'711	23'632'737
Life	32'234'588	41'016'299
Health	49'120'720	14'514'036
Non-Life	3'341'867	2'988'282
Default	2'940'544	1'903'234
Diversification	-36'573'840	-24'605'397
<b>BSCR</b>	<b>81'682'591</b>	<b>59'449'190</b>
Operational risk	8'378'879	7'439'386
Adjustment	-11'257'684	-8'361'072
<b>Total SCR</b>	<b>78'803'786</b>	<b>58'527'505</b>

No simplifications have been used in the sub modules, nor have undertaking specific parameters been applied. Due to the size of the business and the type of products sold, Quantum uses the standard formula in order to calculate the SCR for Pillar I of Solvency II.



The MCR is composed by the following items:

Linear formula components	2023	2023
TP with profit participation	0	0
TP with future discretionary benefits	0	0
Unit-linked Technical Provisions	359'877'326	355'994'556
Other Life Technical Provisions	0	15'885'226
Capital-at-risk Life	8'603'507'823	19'380'994'098
TP Health NSLT	37'708'375	
TP Non-Life	-1'187'675	1'561'071
Written Premiums Health NSLT	50'449'681	
Written Premiums Non-Life	1'346'717	1'567'987
Absolute minimum MCR Life	4'000'000	4'000'000
Absolute minimum MCR Non-Life	2'700'000	2'700'000
Absolute minimum MCR	6'700'000	6'700'000
<b>MCR Life</b>	<b>8'541'597</b>	<b>16'403'175</b>
<b>MCR Non-Life</b>	<b>9'392'319</b>	<b>481'654</b>
<b>MCR Linear</b>	<b>17'933'916</b>	<b>16'884'829</b>
<b>MCR</b>	<b>19'700'947</b>	<b>16'884'829</b>

Overall, the models used by Quantum are a reasonable implementation of the Solvency II standard formula, where the obtained capital adequately reflects the risks of Quantum.

### E.3. Use of the duration-based equity risk sub-module in the calculation of the Solvency Capital Requirement

This was not applied, as equity is mainly held in investment funds and therefore this was not deemed significant.

### E.4. Differences between the standard formula and any internal model used

No internal model was used.

### E.5. Non-compliance with the Minimum Capital Requirement and non-compliance with the Solvency Capital Requirement

The company complies with the MCR and SCR requirement.

### E.6. Any other information

There is no other material information regarding capital management then already mentioned further above.



## Annex

This annex contains the quantitative reporting templates (hereinafter “QRTs”) as required by the regulator for the reporting date 31<sup>st</sup> December 2024. The following report sheets contain cell coordinates in the form of row and column location of a data point in a certain table, such as RO010 and C0020. With these cell coordinates in combination with the spreadsheet notation (such as S.02.01.01), the interested reader can learn the exact requirements of the individual contents according to the Commission Implementing Regulation (EU) 2023/895.

The following QRTs are disclosed: S.02.01.02, S.04.05.21, S.05.01.02, S.05.02.04, S.12.01.02, S.17.01.02, S.19.01.21, S.23.01.01, S.23.01.22, S.25.01.21 and S.28.02.01.

The following QRTs are not disclosed in the scope of this report:

- **QRT S.22.01.22 and QRT S.22.01.22:** Impact of long term guarantees measures and transitionals  
Quantum uses only the standard formula without the consideration of long term guarantee measures and transitionals.
- **QRT S.25.02.21:** Solvency Capital Requirement - for undertakings using an internal model (partial or full)  
Quantum uses only the standard formula to calculate the solvency capital requirement. This QRT is only to be disclosed by insurance companies that are also using a partial or full internal model.



**QRT S.02.01.02 (1st part)**

in EUR		Solvency II value
Assets		C0010
Intangible assets	R0030	-
Deferred tax assets	R0040	-
Pension benefit surplus	R0050	-
Property, plant & equipment held for own use	R0060	83'461.55
Investments (other than assets held for index-linked and unit-linked contracts)	R0070	168'775'746.39
Property (other than for own use)	R0080	-
Holdings in related undertakings, including participations	R0090	-
Equities	R0100	14'983'898.94
Equities - listed	R0110	5'983'898.94
Equities - unlisted	R0120	9'000'000.00
Bonds	R0130	144'550'377.89
Government Bonds	R0140	13'059'973.55
Corporate Bonds	R0150	131'490'404.34
Structured notes	R0160	-
Collateralised securities	R0170	-
Collective Investments Undertakings	R0180	9'238'880.62
Derivatives	R0190	-
Deposits other than cash equivalents	R0200	-
Other investments	R0210	2'588.94
Assets held for index-linked and unit-linked contracts	R0220	358'284'233.72
Loans and mortgages	R0230	66'970'848.00
Loans on policies	R0240	-
Loans and mortgages to individuals	R0250	-
Other loans and mortgages	R0260	66'970'848.00
Reinsurance recoverables from:	R0270	-17'279'765.35
Non-life and health similar to non-life	R0280	32'897'367.86
Non-life excluding health	R0290	-
Health similar to non-life	R0300	32'897'367.86
Life and health similar to life, excluding health and index-linked and unit-linked	R0310	-50'177'133.21
Health similar to life	R0320	-19'030'668.96
Life excluding health and index-linked and unit-linked	R0330	-31'146'464.25
Life index-linked and unit-linked	R0340	-
Deposits to cedants	R0350	-
Insurance and intermediaries receivables	R0360	17'202'351.66
Reinsurance receivables	R0370	1'616'259.76
Receivables (trade, not insurance)	R0380	397'924.03
Own shares (held directly)	R0390	-
Amounts due in respect of own fund items or initial fund called up but not paid	R0400	-
Cash and cash equivalents	R0410	14'371'905.11
Any other assets, not elsewhere shown	R0420	264'413.02
<b>Total assets</b>	<b>R0500</b>	<b>610'687'377.89</b>



**QRT S.02.01.02 (2nd part)**

in EUR		Solvency II value
<b>Liabilities</b>		
Technical provisions – non-life	R0510	73'854'774.10
Technical provisions – non-life (excluding health)	R0520	211'723.75
Technical provisions calculated as a whole	R0530	-
Best Estimate	R0540	-1'187'674.75
Risk margin	R0550	1'399'398.50
Technical provisions - health (similar to non-life)	R0560	73'643'050.35
Technical provisions calculated as a whole	R0570	-
Best Estimate	R0580	70'605'742.72
Risk margin	R0590	3'037'307.64
Technical provisions - life (excluding index-linked and unit-linked)	R0600	-28'765'046.10
Technical provisions - health (similar to life)	R0610	-20'134'318.21
Technical provisions calculated as a whole	R0620	-
Best Estimate	R0630	-33'304'068.25
Risk margin	R0640	13'169'750.04
Technical provisions – life (excluding health and index-linked and unit-li	R0650	-8'630'727.89
Technical provisions calculated as a whole	R0660	-
Best Estimate	R0670	-24'340'631.91
Risk margin	R0680	15'709'904.02
Technical provisions – index-linked and unit-linked	R0690	362'567'083.83
Technical provisions calculated as a whole	R0700	-
Best Estimate	R0710	359'877'325.59
Risk margin	R0720	2'689'758.23
Contingent liabilities	R0740	-
Provisions other than technical provisions	R0750	2'551'705.03
Pension benefit obligations	R0760	-
Deposits from reinsurers	R0770	48'323'553.88
Deferred tax liabilities	R0780	13'301'556.13
Derivatives	R0790	-
Debts owed to credit institutions	R0800	-
Financial liabilities other than debts owed to credit institutions	R0810	-
Insurance & intermediaries payables	R0820	6'022'631.02
Reinsurance payables	R0830	6'357'077.51
Payables (trade, not insurance)	R0840	2'360'459.91
Subordinated liabilities	R0850	-
Subordinated liabilities not in Basic Own Funds	R0860	-
Subordinated liabilities in Basic Own Funds	R0870	-
Any other liabilities, not elsewhere shown	R0880	440'196.96
<b>Total liabilities</b>	<b>R0900</b>	<b>487'013'992.27</b>
<b>Excess of assets over liabilities</b>	<b>R1000</b>	<b>123'673'385.62</b>



**S.04.05.21**

**Premiums, claims and expenses by country**

**Home country: Non-life insurance and reinsurance obligations**

Country in EUR	R0010	Top 5 countries: non-life					
		Home country C0010	NETHERLANDS C0020	SWITZERLAND C0030	LITHUANIA C0040	ITALY C0050	SPAIN C0060
<b>Premiums written (gross)</b>							
Gross Written Premium (direct)	R0020	-	98'744'157.56	11'332'308.72	558'458.78	988'135.27	605'608.31
Gross Written Premium (proportional reinsurance)	R0021	-	-	-	-	-	-
Gross Written Premium (non-proportional reinsurance)	R0022	-	-	-	-	-	-
<b>Premiums earned (gross)</b>							
Gross Earned Premium (direct)	R0030	-	98'744'157.56	11'332'308.72	558'458.78	988'135.27	605'608.31
Gross Earned Premium (proportional reinsurance)	R0031	-	-	-	-	-	-
Gross Earned Premium (non-proportional reinsurance)	R0032	-	-	-	-	-	-
<b>Claims incurred (gross)</b>							
Claims incurred (direct)	R0040	-	50'756'225.06	6'482'163.97	315'686.60	9'036.59	31'786.41
Claims incurred (proportional reinsurance)	R0041	-	-	-	-	-	-
Claims incurred (non-proportional reinsurance)	R0042	-	-	-	-	-	-
<b>Expenses incurred (gross)</b>							
Gross Expenses Incurred (direct)	R0050	-	10'745'872.04	2'040'583.13	231'512.61	197'628.32	121'121.65
Gross Expenses Incurred (proportional reinsurance)	R0051	-	-	-	-	-	-
Gross Expenses Incurred (non-proportional reinsurance)	R0052	-	-	-	-	-	-

**Home country: Life insurance and reinsurance obligations**

Country in EUR	R0010	Top 5 countries: life					
		Home country C0010	NETHERLANDS C0020	SWEDEN C0030	AUSTRIA C0040	GERMANY C0050	SLOVAKIA C0060
<b>Gross Written Premium</b>	R1020	-	47'453'215.68	50'111'313.06	4'672'724.88	2'309'091.57	1'468'796.25
<b>Gross Earned Premium</b>	R1030	-	47'453'215.68	50'111'313.06	4'672'724.88	2'309'091.57	1'468'796.25
<b>Claims incurred</b>	R1040	280'000.00	27'690'431.51	38'953'242.85	594'188.74	3'871'386.05	137'875.74
<b>Gross Expenses Incurred</b>	R1050	22'275.74	6'900'053.60	1'345'351.43	527'406.77	12'182.01	1'194'647.02



**QRT S.05.01.02**

**Premiums, claims and expenses by line of business**

Line of Business for: non-life insurance and reinsurance obligations (direct business and accepted proportional reinsurance)

in EUR		Income protection insurance	Miscellaneous financial loss	Total
		C0020	C0120	C0200
<b>Premiums written</b>				
Gross - Direct Business	R0110	110'447'818.97	1'870'643.05	112'318'462.02
Gross - Proportional reinsurance accepted	R0120	-	-	-
Gross - Non-proportional reinsurance accepted	R0130			
Reinsurers' share	R0140	48'123'387.19	-	48'123'387.19
Net	R0200	62'324'431.78	1'870'643.05	64'195'074.83
<b>Premiums earned</b>				
Gross - Direct Business	R0210	110'449'364.64	1'870'643.05	112'320'007.69
Gross - Proportional reinsurance accepted	R0220	-	-	-
Gross - Non-proportional reinsurance accepted	R0230			
Reinsurers' share	R0240	48'123'387.19	-	48'123'387.19
Net	R0300	62'325'977.45	1'870'643.05	64'196'620.50
<b>Claims incurred</b>				
Gross - Direct Business	R0310	57'532'390.41	62'768.24	57'595'158.65
Gross - Proportional reinsurance accepted	R0320	-	-	-
Gross - Non-proportional reinsurance accepted	R0330			
Reinsurers' share	R0340	27'328'382.14	-	27'328'382.14
Net	R0400	30'204'008.27	62'768.24	30'266'776.51
<b>Expenses incurred</b>	R0550	17'409'428.86	461'878.72	17'871'307.58
<b>Balance - other technical expenses/income</b>	R1200			
<b>Total expenses</b>	R1300			17'871'307.58

Line of Business for: life insurance obligations

in EUR		Health insurance	Index-linked and unit-linked insurance	Other life insurance	Total
		C0210	C0230	C0240	C0300
<b>Premiums written</b>					
Gross	R1410	37'310'077.55	178'384'340.83	51'726'322.02	267'420'740.40
Reinsurers' share	R1420	22'104'333.49	44'958.92	24'287'988.21	46'437'280.62
Net	R1500	15'205'744.06	178'339'381.91	27'438'333.81	220'983'459.78
<b>Premiums earned</b>					
Gross	R1510	37'380'425.65	178'384'340.83	51'466'263.83	267'231'030.31
Reinsurers' share	R1520	22'104'333.49	44'958.92	24'287'988.21	46'437'280.62
Net	R1600	15'276'092.16	178'339'381.91	27'178'275.62	220'793'749.69
<b>Claims incurred</b>					
Gross	R1610	9'059'102.13	80'891'810.11	28'143'142.98	118'094'055.22
Reinsurers' share	R1620	8'516'598.10	21'656.66	22'284'048.26	30'822'303.02
Net	R1700	542'504.03	80'870'153.45	5'859'094.72	87'271'752.20
<b>Expenses incurred</b>	R1900	11'039'366.74	5'728'699.67	10'827'267.82	27'595'334.23
<b>Balance - other technical expenses/income</b>	R2500				-
<b>Total expenses</b>	R2600				27'595'334.23
<b>Total amount of surrenders</b>	R2700	-	79'416'360.33	-	79'416'360.33



S.05.02.04

Premiums, claims and expenses by country

in EUR	Home Country	Country (by amount of gross premiums written) - non-life obligations						Total Top 5 and home country
		C0010	C0020	C0030	C0040	C0050	C0060	
	R0010		NETHERLANDS	SWITZERLAND	LITHUANIA	ITALY	SPAIN	
		C0080	C0090	C0100	C0110	C0120	C0130	C0140
<b>Premiums written</b>								
Gross - Direct Business	R0110	-	98'744'157.56	11'332'308.72	558'458.78	988'135.27	605'608.31	112'228'668.64
Gross - Proportional reinsurance accepted	R0120	-	-	-	-	-	-	-
Gross - Non-proportional reinsurance accepted	R0130	-	-	-	-	-	-	-
Reinsurers' share	R0140	-	48'123'387.19	-	-	-	-	48'123'387.19
Net	R0200	-	50'620'770.37	11'332'308.72	558'458.78	988'135.27	605'608.31	64'105'281.45
<b>Premiums earned</b>								
Gross - Direct Business	R0210	-	98'744'157.56	11'332'308.72	558'458.78	988'135.27	605'608.31	112'228'668.64
Gross - Proportional reinsurance accepted	R0220	-	-	-	-	-	-	-
Gross - Non-proportional reinsurance accepted	R0230	-	-	-	-	-	-	-
Reinsurers' share	R0240	-	48'123'387.19	-	-	-	-	48'123'387.19
Net	R0300	-	50'620'770.37	11'332'308.72	558'458.78	988'135.27	605'608.31	64'105'281.45
<b>Claims incurred</b>								
Gross - Direct Business	R0310	-	50'756'225.06	6'482'163.97	315'686.60	9'036.59	31'786.41	57'594'898.63
Gross - Proportional reinsurance accepted	R0320	-	-	-	-	-	-	-
Gross - Non-proportional reinsurance accepted	R0330	-	-	-	-	-	-	-
Reinsurers' share	R0340	-	27'328'382.14	-	-	-	-	27'328'382.14
Net	R0400	-	23'427'842.92	6'482'163.97	315'686.60	9'036.59	31'786.41	30'266'516.49
<b>Expenses incurred</b>	R0550	-	10'745'872.04	2'040'583.13	231'512.61	197'628.32	121'121.65	13'336'717.75
<b>Other expenses</b>	R1200							-
<b>Total expenses</b>	R1300							13'336'717.75

Premiums, claims and expenses by country

in EUR	Home Country	Country (by amount of gross premiums written) - life obligations						Total Top 5 and home country
		C0150	C0160	C0170	C0180	C0190	C0200	
	R1400		NETHERLANDS	SWEDEN	AUSTRIA	GERMANY	SLOVAKIA	
		C0220	C0230	C0240	C0250	C0260	C0270	C0280
<b>Premiums written</b>								
Gross	R1410	-	47'453'215.68	50'111'313.06	4'672'724.88	2'309'091.57	1'468'796.25	106'015'141.44
Reinsurers' share	R1420	-	23'976'232.95	-	-	-	-	23'976'232.95
Net	R1500	-	23'476'982.73	50'111'313.06	4'672'724.88	2'309'091.57	1'468'796.25	82'038'908.49
<b>Premiums earned</b>								
Gross	R1510	-	47'453'215.68	50'111'313.06	4'672'724.88	2'309'091.57	1'468'796.25	106'015'141.44
Reinsurers' share	R1520	-	23'976'232.95	-	-	-	-	23'976'232.95
Net	R1600	-	23'476'982.73	50'111'313.06	4'672'724.88	2'309'091.57	1'468'796.25	82'038'908.49
<b>Claims incurred</b>								
Gross	R1610	280'000.00	27'690'431.51	38'953'242.85	594'188.74	3'871'386.05	137'875.74	71'527'124.89
Reinsurers' share	R1620	-	22'220'684.40	-	-	63'363.86	-	22'284'048.26
Net	R1700	280'000.00	5'469'747.11	38'953'242.85	594'188.74	3'808'022.19	137'875.74	49'243'076.63
<b>Expenses incurred</b>	R1900	22'275.74	6'900'053.60	1'345'351.43	527'406.77	12'182.01	1'194'647.02	10'001'916.57
<b>Balance - other technical expenses/income</b>	R2500							-
<b>Total expenses</b>	R2600							10'001'916.57





S.12.01.02

Life and Health SLT Technical Provisions

In EUR		Index-linked and unit-linked insurance		
		Contracts without options and guarantees		Contracts with options or guarantees
		C0030	C0040	C0050
Technical provisions calculated as a whole	R0010	-		
Total Recoverables from reinsurance/SPV and Finite Re after the adjustment for expected losses due to counterparty default associated to TP as a whole	R0020	-		
<b>Technical provisions calculated as a sum of BE and RM</b>				
<b>Best Estimate</b>				
Gross Best Estimate	R0030		347'422'259.09	12'455'066.50
Total Recoverables from reinsurance/SPV and Finite Re after the adjustment for expected losses due to counterparty default	R0080		-	-
Best estimate minus recoverables from reinsurance/SPV and Finite Re	R0090		347'422'259.09	12'455'066.50
Risk Margin	R0100	2'689'758.23		
Technical provisions - total	R0200	362'567'083.83		

		Other life insurance			Total (Life other than health insurance, incl. Unit-Linked)
		Contracts without options and guarantees		Contracts with options or guarantees	
		C0060	C0070	C0080	
Technical provisions calculated as a whole	R0010	-			-
Total Recoverables from reinsurance/SPV and Finite Re after the adjustment for expected losses due to counterparty default associated to TP as a whole	R0020	-			-
<b>Technical provisions calculated as a sum of BE and RM</b>					
<b>Best Estimate</b>					
Gross Best Estimate	R0030		-24'340'631.91	-	335'536'693.68
Total Recoverables from reinsurance/SPV and Finite Re after the adjustment for expected losses due to counterparty default	R0080		-31'146'464.25	-	-31'146'464.25
Best estimate minus recoverables from reinsurance/SPV and Finite Re	R0090		6'805'832.34	-	366'683'157.93
Risk Margin	R0100	15'709'904.02			18'399'662.25
Technical provisions - total	R0200	-8'630'727.89			353'936'355.93

		Health insurance (direct business)			Total (Health similar to life insurance)
		Contracts without options and guarantees		Contracts with options or guarantees	
		C0160	C0170	C0180	
Technical provisions calculated as a whole	R0010	-			-
Total Recoverables from reinsurance/SPV and Finite Re after the adjustment for expected losses due to counterparty default associated to TP as a whole	R0020	-			-
<b>Technical provisions calculated as a sum of BE and RM</b>					
<b>Best Estimate</b>					
Gross Best Estimate	R0030		-33'304'068.25	-	-33'304'068.25
Total Recoverables from reinsurance/SPV and Finite Re after the adjustment for expected losses due to counterparty default	R0080		-19'030'668.96	-	-19'030'668.96
Best estimate minus recoverables from reinsurance/SPV and Finite Re	R0090		-14'273'399.29	-	-14'273'399.29
Risk Margin	R0100	13'169'750.04			13'169'750.04
Technical provisions - total	R0200	-20'134'318.21			-20'134'318.21



S.17.01.02

Non-life Technical Provisions

in EUR		Direct business and accepted proportional reinsurance		Total Non-Life obligation
		Income protection insurance	Miscellaneous financial loss	
		C0030	C0130	C0180
<b>Technical provisions calculated as a whole</b>	<b>R0010</b>	-	-	-
Total Recoverables from reinsurance/SPV and Finite Re after the adjustment for expected losses due to counterparty default associated to TP as a whole	R0050	-	-	-
<b>Technical provisions calculated as a sum of BE and RM</b>				
<b>Best estimate</b>				
Premium provisions				
Gross	R0060	96'172.10	-1'975'232.11	-1'879'060.01
Total recoverable from reinsurance/SPV and Finite Re after the adjustment for expected losses due to counterparty default	R0140	-	-	-
Net Best Estimate of Premium Provisions	R0150	96'172.10	-1'975'232.11	632'001.62
<b>Claims provisions</b>				
Gross	R0160	70'509'570.62	787'557.36	71'297'127.98
Total recoverable from reinsurance/SPV and Finite Re after the adjustment for expected losses due to counterparty default	R0240	-	-	-
Net Best Estimate of Claims Provisions	R0250	37'612'202.72	787'557.36	38'399'760.12
<b>Total Best estimate - gross</b>	<b>R0260</b>	<b>70'605'742.72</b>	<b>-1'187'674.75</b>	<b>69'418'067.97</b>
<b>Total Best estimate - net</b>	<b>R0270</b>	<b>37'708'374.86</b>	<b>-1'187'674.75</b>	<b>36'520'700.10</b>
<b>Risk margin</b>	<b>R0280</b>	<b>3'037'307.64</b>	<b>1'399'398.50</b>	<b>4'436'706.14</b>
<b>Technical provisions - total</b>				
Technical provisions - total	R0320	73'643'050.35	211'723.75	73'854'774.10
Recoverable from reinsurance contract/SPV and Finite Re after the adjustment for expected losses due to counterparty default - total	R0330	-	-	-
<b>Technical provisions minus recoverables from reinsurance/SPV and Finite Re - total</b>	<b>R0340</b>	<b>40'745'682.49</b>	<b>211'723.75</b>	<b>40'957'406.24</b>

S.19.01.21

Non-life insurance claims

Accident year	Z0020
---------------	-------

Gross Claims Paid (non-cumulative) - Development year (absolute amount). Total Non-Life Business

		0	1	2	3	4	5	6	7	8	9	10 & +
		C0010	C0020	C0030	C0040	C0050	C0060	C0070	C0080	C0090	C0100	C0110
Prior	R0100											-
N-9	R0160	-	-	-	-	-	-	-	-	-	-	
N-8	R0170	-	-	-	-	-	-	-	-	-		
N-7	R0180	-	-	-	-	-	-	-	-			
N-6	R0190	-	-	-	-	-	-	-				
N-5	R0200	-	-	-	-	-	-					
N-4	R0210	-	-	-	-	-						
N-3	R0220	570.02	-	-	-							
N-2	R0230	4'898.76	-	-								
N-1	R0240	29'522.09	-									
N	R0250	42'114.72										

Gross Claims Paid (non-cumulative) - Current year, sum of years (cumulative). Total Non-Life Business

		0	1	2	3	4	5	6	7	8	9	10 & +
		C0200	C0210	C0220	C0230	C0240	C0250	C0260	C0270	C0280	C0290	C0300
Prior	R0100											-
N-9	R0160	-	-	-	-	-	-	-	-	-	-	
N-8	R0170	-	-	-	-	-	-	-	-	-		
N-7	R0180	-	-	-	-	-	-	-	-			
N-6	R0190	-	-	-	-	-	-					
N-5	R0200	-	-	-	-	-	-					
N-4	R0210	-	-	-	-	-						
N-3	R0220	96'501.42	56'942.24	-	-							
N-2	R0230	331'191.59	-	-								
N-1	R0240	318'013.13	-									
N	R0250	113'755.34										



S.23.01.01

Own funds

in EUR		Total	Tier 1 - unrestricted
		C0010	C0020
<b>Basic own funds before deduction for participations in other financial sector as foreseen in article 68 of Delegated Regulation 2015/35</b>			
Ordinary share capital (gross of own shares)	R0010	16'235'000.00	16'235'000.00
Share premium account related to ordinary share capital	R0030	22'268'601.01	22'268'601.01
Initial funds, members' contributions or the equivalent basic own - fund item for mutual and mutual-type undertakings	R0040	-	-
Subordinated mutual member accounts	R0050	-	
Surplus funds	R0070	-	-
Preference shares	R0090	-	
Share premium account related to preference shares	R0110	-	
Reconciliation reserve	R0130	83'369'784.61	83'369'784.61
Subordinated liabilities	R0140	-	
An amount equal to the value of net deferred tax assets	R0160	-	
Other own fund items approved by the supervisory authority as basic own funds not specified above	R0180	-	-
<b>Own funds from the financial statements that should not be represented by the reconciliation reserve and do not meet the criteria to be classified as Solvency II own funds</b>			
Own funds from the financial statements that should not be represented by the reconciliation reserve and do not meet the criteria to be classified as Solvency II own funds	R0220	-	
<b>Deductions</b>			
Deductions for participations in financial and credit institutions	R0230	-	-
<b>Total basic own funds after deductions</b>	R0290	121'873'385.62	121'873'385.62
<b>Total ancillary own funds</b>	R0400	-	
<b>Available and eligible own funds</b>			
Total available own funds to meet the SCR	R0500	121'873'385.62	121'873'385.62
Total available own funds to meet the MCR	R0510	121'873'385.62	121'873'385.62
Total eligible own funds to meet the SCR	R0540	121'873'385.62	121'873'385.62
Total eligible own funds to meet the MCR	R0550	121'873'385.62	121'873'385.62
SCR	R0580	78'803'786.35	
MCR	R0600	19'700'946.59	
Ratio of Eligible own funds to SCR	R0620	155%	
Ratio of Eligible own funds to MCR	R0640	619%	

in EUR		C0060
<b>Reconciliation reserve</b>		
Excess of assets over liabilities	R0700	123'673'385.62
Own shares (held directly and indirectly)	R0710	-
Foreseeable dividends, distributions and charges	R0720	1'800'000.00
Other basic own fund items	R0730	38'503'601.01
Adjustment for restricted own fund items in respect of matching adjustment portfolios and ring fenced funds	R0740	-
<b>Reconciliation reserve</b>	R0760	83'369'784.61
<b>Expected profits</b>		
Expected profits included in future premiums (EPIFP) - Life business	R0770	76'767'743.70
Expected profits included in future premiums (EPIFP) - Non-life business	R0780	-
<b>Total Expected profits included in future premiums (EPII)</b>	R0790	76'767'743.70



S.25.01.21

Solvency Capital Requirement - for undertakings on Standard Formula

in EUR		Gross solvency capital requirement
		C0110
Market risk	R0010	30'618'710.78
Counterparty default risk	R0020	2'940'544.03
Life underwriting risk	R0030	32'234'588.44
Health underwriting risk	R0040	49'120'720.26
Non-life underwriting risk	R0050	3'341'867.02
Diversification	R0060	-36'573'839.89
Intangible asset risk	R0070	-
<b>Basic Solvency Capital Requirement</b>	<b>R0100</b>	<b>81'682'590.64</b>

Calculation of Solvency Capital Requirement

in EUR		Value
		C0110
Operational risk	R0130	8'378'879.47
Loss-absorbing capacity of technical provisions	R0140	-
Loss-absorbing capacity of deferred taxes	R0150	-11'257'683.76
Capital requirement for business operated in accordance with Art. 4 of Directive 2003/41/EC	R0160	-
<b>Solvency Capital Requirement excluding capital add-on</b>	<b>R0200</b>	<b>78'803'786.35</b>
Capital add-ons already set	R0210	-
of which, capital add-ons already set - Article 37 (1) Type a	R0211	-
of which, capital add-ons already set - Article 37 (1) Type b	R0212	-
of which, capital add-ons already set - Article 37 (1) Type c	R0213	-
of which, capital add-ons already set - Article 37 (1) Type d	R0214	-
Solvency capital requirement	R0220	78'803'786.35

Approach to tax rate

		Yes/No
		C0109
Approach based on average tax rate	R0590	2 - No

Calculation of loss absorbing capacity of deferred taxes

		LAC DT
		C0130
LAC DT	R0640	-11'257'683.76
LAC DT justified by reversion of deferred tax liabilities	R0650	-
LAC DT justified by reference to probable future taxable economic profit	R0660	-11'257'683.76
LAC DT justified by carry back, current year	R0670	-
LAC DT justified by carry back, future years	R0680	-
Maximum LAC DT	R0690	-



S.28.02.01

Minimum capital Requirement - Both life and non-life insurance activity

		MCR components	
		Non-life activities	Life activities
		MCR(NL, NL) Result	MCR(NL, L)Result
		C0010	C0020
Linear formula component for non-life insurance and reinsurance obligations	R0010	9'392'319.44	-

		Background information			
		Non-life activities		Life activities	
		Net (of reinsurance/SPV) best estimate and TP calculated as a whole	Net (of reinsurance) written premiums in the last 12 months	Net (of reinsurance/SPV) best estimate and TP calculated as a whole	Net (of reinsurance) written premiums in the last 12 months
		C0030	C0040	C0050	C0060
Income protection insurance and proportional reinsurance	R0030	37'708'374.86	50'449'681.31	-	-
Miscellaneous financial loss insurance and proportional reinsurance	R0130	-	1'346'716.62	-	-

		Non-life activities	Life activities
		MCR(L, NL) Result	MCR(L, L) Result
		C0070	C0080
Linear formula component for life insurance and reinsurance obligations	R0200	-	8'541'596.75

		Net (of reinsurance/SPV) best estimate and TP calculated as a whole	Net (of reinsurance/SPV) total capital at risk	Net (of reinsurance/SPV) best estimate and TP calculated as a whole	Net (of reinsurance/SPV) total capital at risk
		C0090	C0100	C0110	C0120
Index-linked and unit-linked insurance obligations	R0230	-	-	359'877'325.59	-
Other life (re)insurance and health (re)insurance obligations	R0240	-	-	-	-
Total capital at risk for all life (re)insurance obligations	R0250	-	-	-	8'603'507'822.59

Overall MCR calculation

		C0130
Linear MCR	R0300	17'933'916.20
SCR	R0310	78'803'786.35
MCR cap	R0320	35'461'703.86
MCR floor	R0330	19'700'946.59
Combined MCR	R0340	19'700'946.59
Absolute floor of the MCR	R0350	6'700'000.00
Minimum Capital Requirement	R0400	19'700'946.59

Notional non-life and life MCR calculation

		Non-life activities	Life activities
		C0140	C0150
Notional linear MCR	R0500	9'392'319.44	8'541'596.75
Notional SCR excluding add-on (annual or latest calculation)	R0510	41'270'982.12	37'532'804.23
Notional MCR cap	R0520	18'571'941.95	16'889'761.90
Notional MCR floor	R0530	10'317'745.53	9'383'201.06
Notional Combined MCR	R0540	10'317'745.53	9'383'201.06
Absolute floor of the notional MCR	R0550	2'700'000.00	4'000'000.00
Notional MCR	R0560	10'317'745.53	9'383'201.06